



CHAIN SAW PARTS LIST

MODEL HCH50

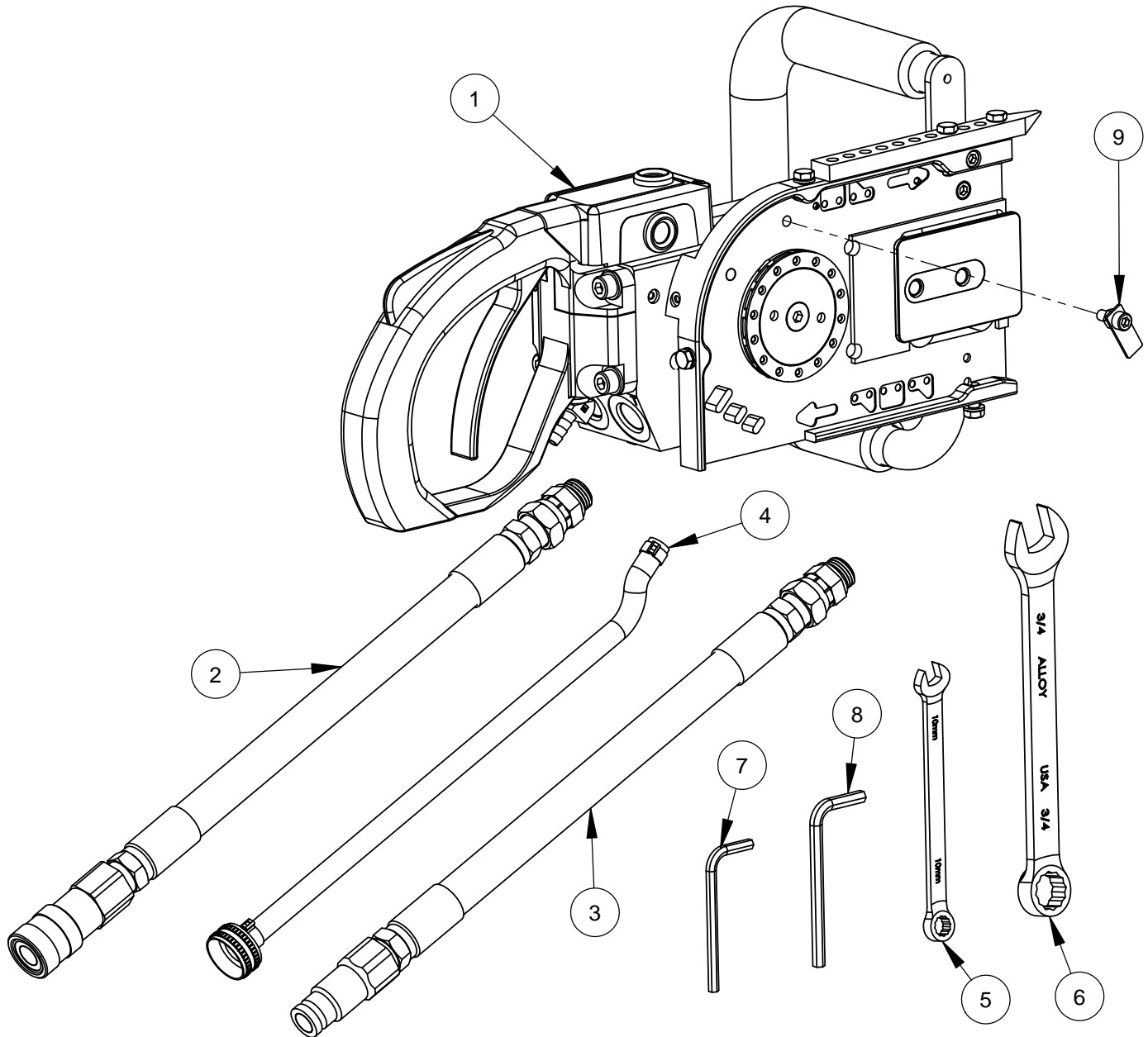
SEPT 2014

Part# 1801445

Table of Contents

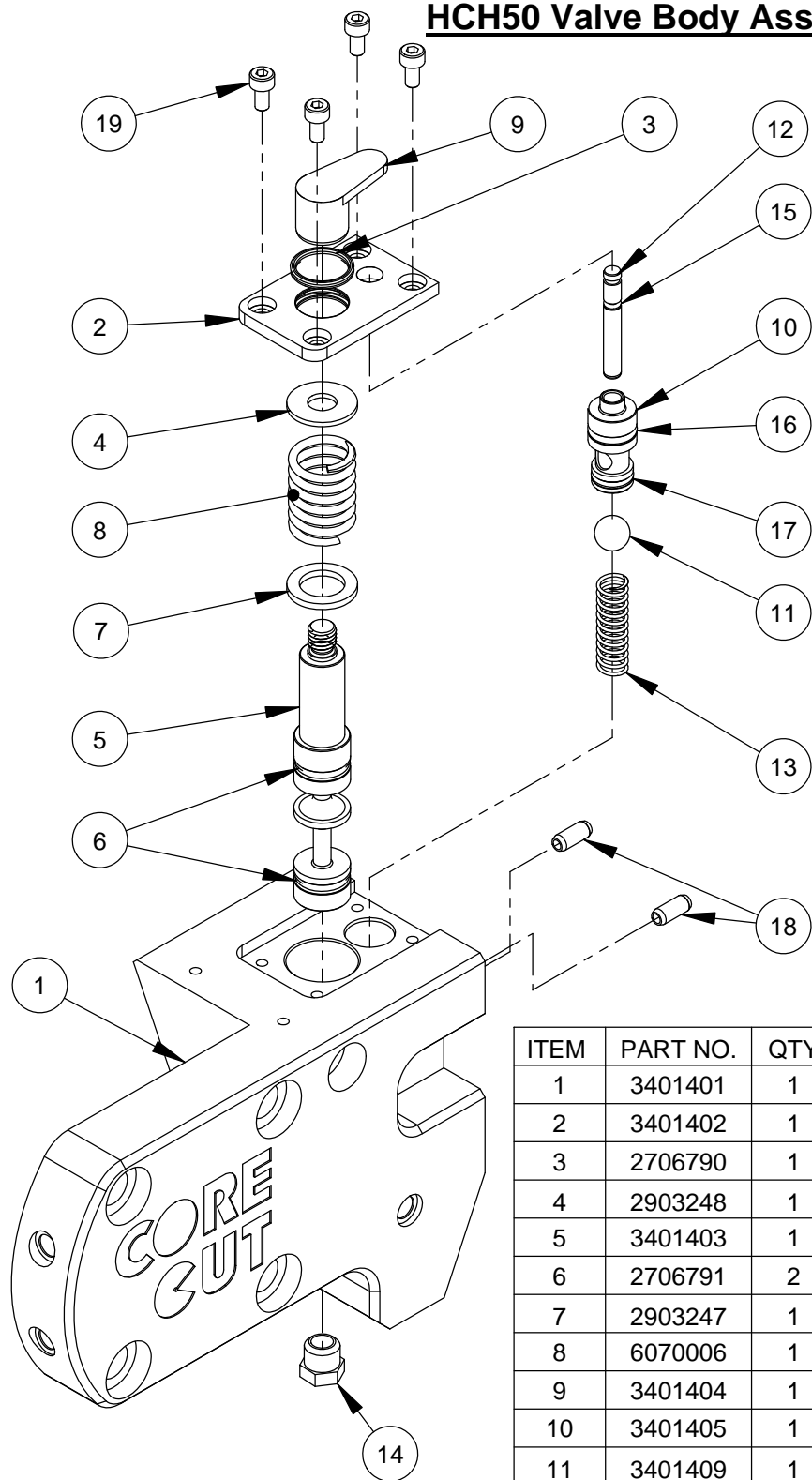
| <u>Description</u> | <u>Page No.</u> |
|---------------------------------|------------------------|
| HCH50 Chain Saw Assembly..... | 4 |
| HCH50 Valve Body Assembly | 5 |
| HCH50 Powerhead Assembly | 6 |
| 12” Chain Saw Bar..... | 8 |
| 16” Chain Saw Bar..... | 9 |
| 20” Chain Saw Bar..... | 10 |
| 24” Chain Saw Bar..... | 11 |
| Warranty | 12 |

HCH50 Chain Saw Assembly #5801010



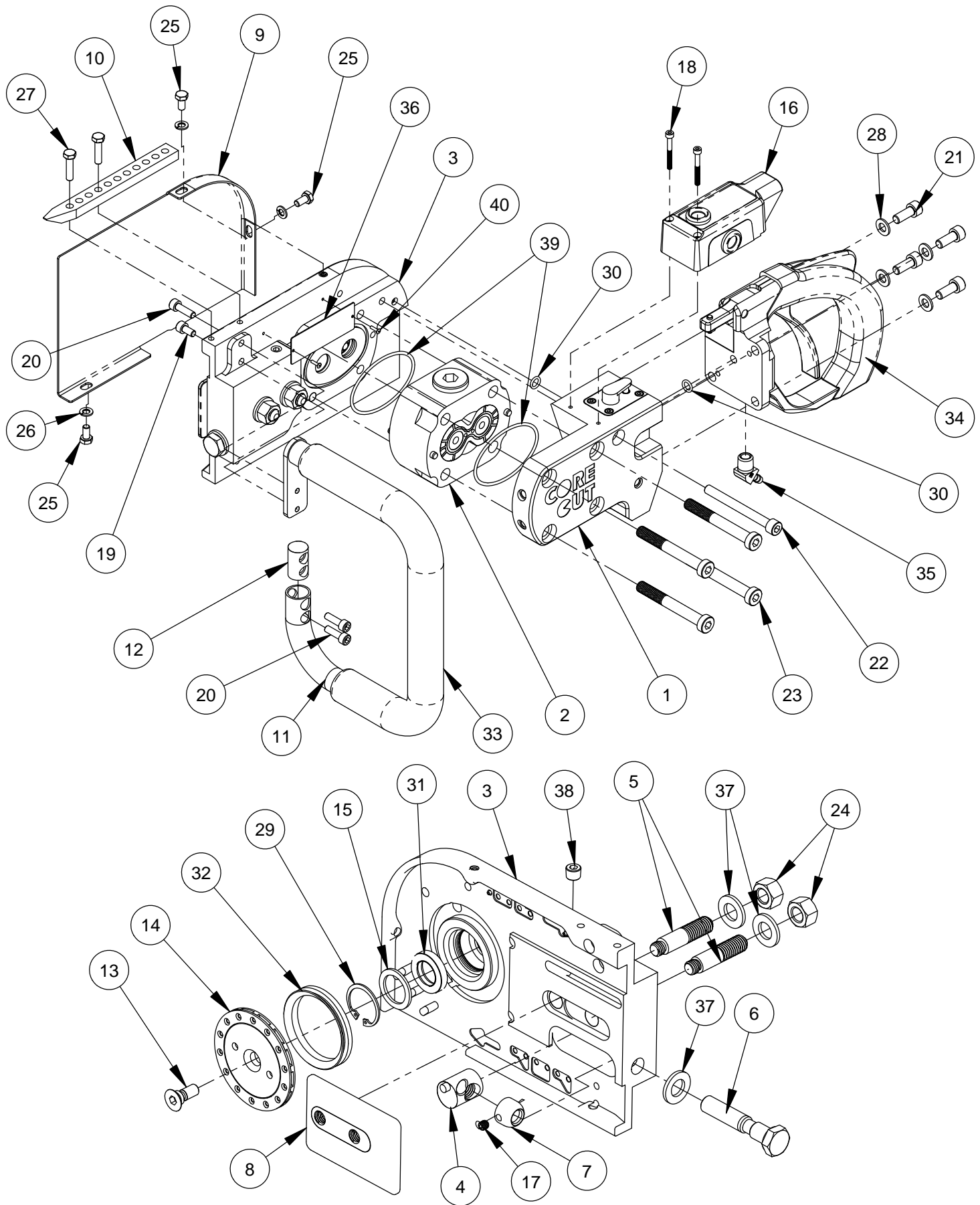
| ITEM | PART NO. | QTY. | DESCRIPTION |
|------|----------|------|----------------------------|
| 1 | 3401281 | 1 | HCH50 Chain Saw Powerhead |
| 2 | 6044000 | 1 | Inlet Hose Assembly, 12" |
| 3 | 6044001 | 1 | Outlet Hose Assembly, 12" |
| 4 | 6049130 | 1 | Water Hose Assembly, 1/4" |
| 5 | 2400221 | 1 | 10MM Combo Wrench 12 Point |
| 6 | 2400146 | 1 | Wrench, 3/4" Combination |
| 7 | 2500359 | 1 | Key, 5MM Hex |
| 8 | 2500360 | 1 | Key, 6MM Hex |
| 9 | 3401077 | 1 | Sprocket Lock Tool Assy. |

HCH50 Valve Body Assembly #3401398



| ITEM | PART NO. | QTY | DESCRIPTION |
|------|----------|-----|-------------------------------------|
| 1 | 3401401 | 1 | Valve Body HCH50 |
| 2 | 3401402 | 1 | Valve Cap |
| 3 | 2706790 | 1 | X-Ring 15.6x1.78 |
| 4 | 2903248 | 1 | Washer 20MM x 8MM x 1.5MM |
| 5 | 3401403 | 1 | Slidegate Valve |
| 6 | 2706791 | 2 | X-Ring 10.77x2.62 |
| 7 | 2903247 | 1 | Washer M12 20MM x 13MM x 2MM |
| 8 | 6070006 | 1 | Spring, Compression 34 x 19.1 x 2.4 |
| 9 | 3401404 | 1 | Beam, HCH50 Valve Body |
| 10 | 3401405 | 1 | Plug Valve |
| 11 | 3401409 | 1 | Ball, Steel 10mm HCH50 |
| 12 | 3401406 | 1 | Needle Valve |
| 13 | 6070007 | 1 | Spring, Compression 8x1/40.5 HCH50 |
| 14 | 3201998 | 1 | Breather Vent, 1/8" NPT |
| 15 | 2706792 | 1 | O-Ring 2x1.5 N70 |
| 16 | 2706793 | 1 | O-Ring 10x2.0 N70 |
| 17 | 2706794 | 1 | O-Ring 9.0x1.5 N70 |
| 18 | 2706795 | 2 | Roll Pin 5x12 ISO8748 BN876 |
| 19 | 3403788 | 4 | Cap Screw, Soc. Hd., M4 x 8mm |

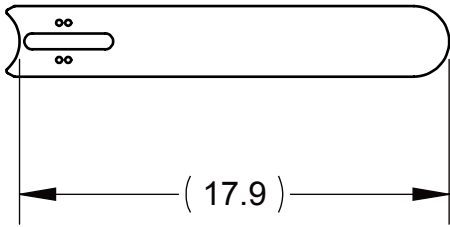
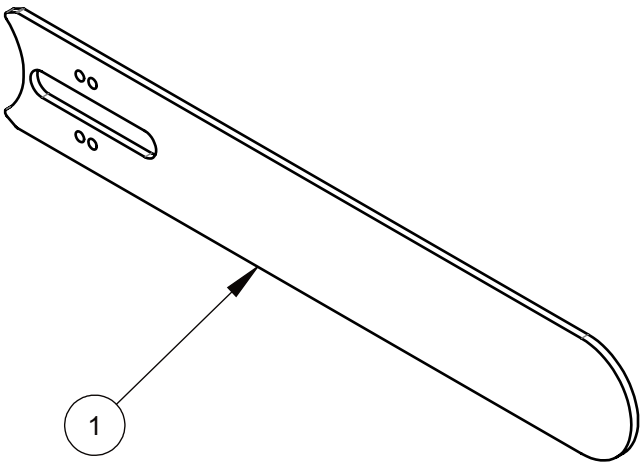
HCH50 Chain Saw Powerhead #3201281



HCH50 Chain Saw Powerhead #3201281

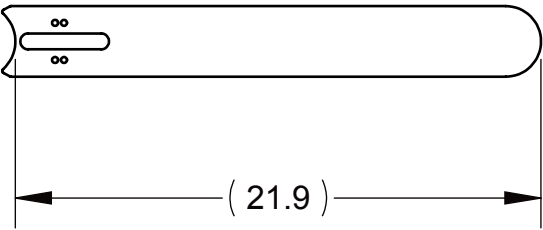
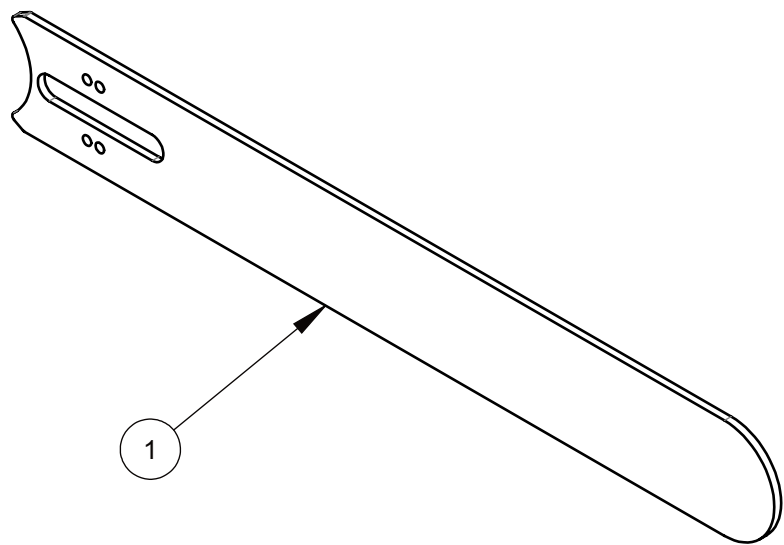
| ITEM | PART NO. | QTY. | DESCRIPTION |
|------|----------|------|--|
| 1 | 3401398 | 1 | Valve Body HCH50 |
| 2 | 3401399 | 1 | Hyd. Motor GR2 8CCM - HCH50 Saw |
| 3 | 3401408 | 1 | Chain Saw Frame Assy, HCH50 |
| 4 | 3401013 | 1 | Tensioning Nut |
| 5 | 3401018 | 2 | Bolt to Chain Bar |
| 6 | 3401015 | 1 | Tensioning Screw |
| 7 | 3401014 | 1 | Nut, Counter |
| 8 | 3401017 | 1 | Chain Bar Plate |
| 9 | 3401287 | 1 | Chain Guard |
| 10 | 3402177 | 1 | Cutting Mandrel |
| 11 | 3401010 | 1 | Handle (Weldment) |
| 12 | 3401392 | 1 | Clamp Piece |
| 13 | 3401152 | 1 | Screw M8 LEFT x 22 |
| 14 | 3401376 | 1 | Drive Sprocket, Chain Saw |
| 15 | 3401407 | 1 | Seal Back Up Ring |
| 16 | 6048785 | 1 | Spirit Level |
| 17 | 3401016 | 1 | Set Screw, M6 x 6 |
| 18 | 2900887 | 2 | Cap Screw, Soc. Hd., M4 x 35 |
| 19 | 3402011 | 1 | Cap Screw, Soc. Hd., M6 x 16 |
| 20 | 2900554 | 3 | Cap Screw, Soc. Hd., M6-1.0 x 20mm |
| 21 | 2900243 | 4 | Cap Screw, Soc. Hd., M8-1.25 x 20mm |
| 22 | 2903249 | 1 | Cap Screw, Soc. Hd., M8 x 80 |
| 23 | 2900666 | 4 | Cap Screw, Soc. Hd., M10 x 80 Low Head |
| 24 | 2900482 | 2 | Hex Nut, M12-1.75 |
| 25 | 2900544 | 3 | Cap Screw, Hex Hd., M6-1.0 x 12mm |
| 26 | 2900765 | 3 | Lock Washer, M6 Split |
| 27 | 2900311 | 2 | Cap Screw, Hex Hd., M6-1.0 x 25mm |
| 28 | 2901336 | 4 | Flat Washer, M8 |
| 29 | 2704957 | 1 | Ring, Retaining, Int 30mm |
| 30 | 3401400 | 2 | O-Ring 8.0x2.0 N70 |
| 31 | 3401295 | 1 | Seal, Motor Shaft |
| 32 | 3400837 | 1 | Seal,CSF40 Sprocket |
| 33 | 3401418 | 1 | Grip, Handle |
| 34 | 6048885 | 1 | Rear Handle Assembly |
| 35 | 3204213 | 1 | 1/4"M.Pipe to 1/4"Hose Barb |
| 36 | 1800169 | 1 | Serial Number Plate, US |
| 37 | 2901357 | 3 | Flat Washer, M12 |
| 38 | 3401417 | 1 | Screw, Locking |
| 39 | 3401416 | 2 | O-ring, M2.62 x 66.35 |
| 40 | 2900053 | 2 | Rivet, 3/32" Dia. |

12" Chain Saw Bar 6063039



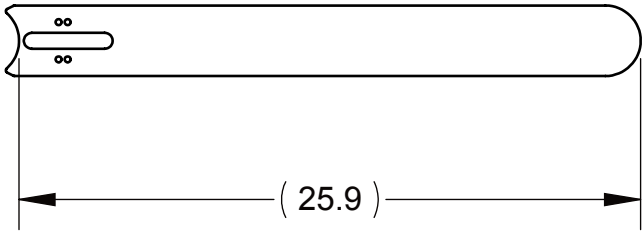
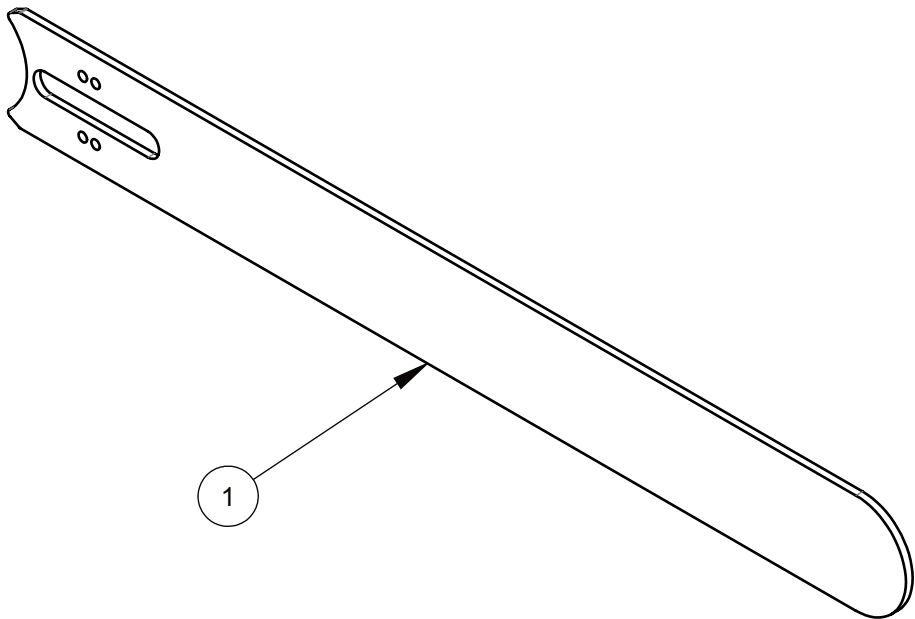
| ITEM | PART NO. | QTY. | DESCRIPTION |
|------|----------|------|-------------|
| 1 | 6063039 | 1 | 12" Saw Bar |

16" Chain Saw Bar 6060261



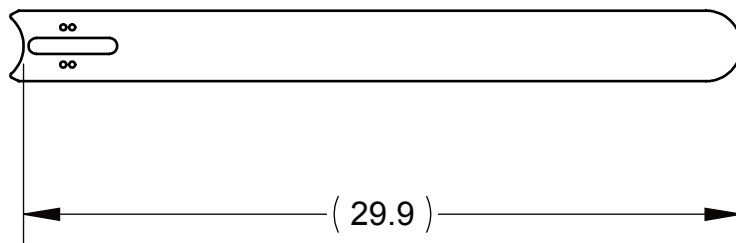
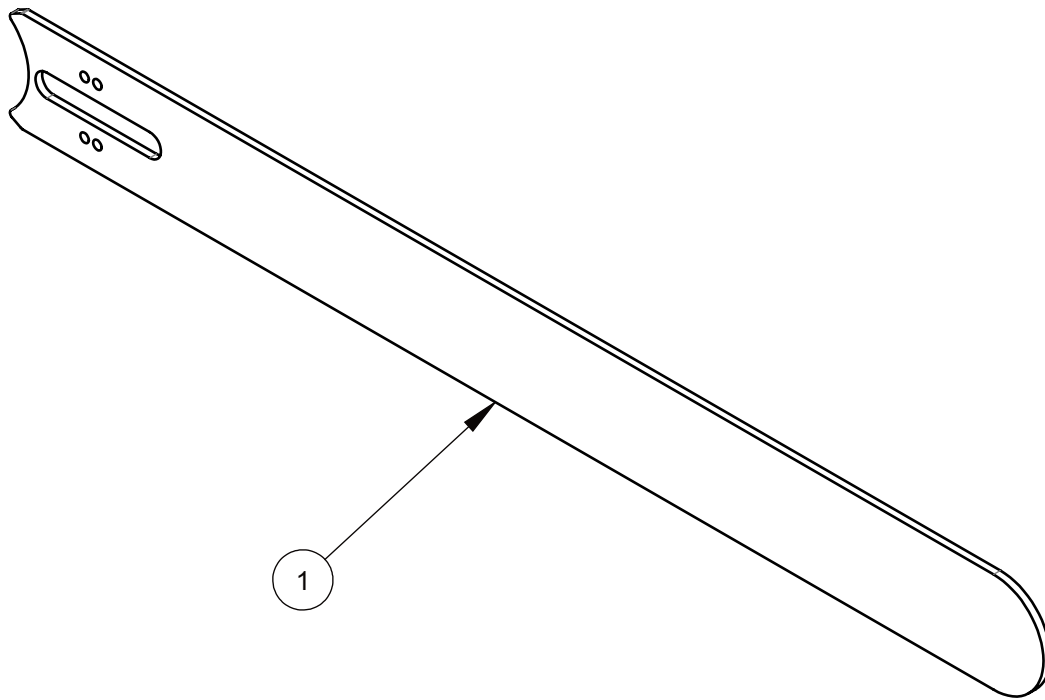
| ITEM | PART NO. | QTY. | DESCRIPTION |
|------|----------|------|-------------|
| 1 | 6060261 | 1 | 16" Saw Bar |

20" Chain Saw Bar 6060260



| ITEM | PART NO. | QTY. | DESCRIPTION |
|------|----------|------|-------------|
| 1 | 6060260 | 1 | 20" Saw Bar |

24" Chain Saw Bar 6063038



| ITEM | PART NO. | QTY. | DESCRIPTION |
|------|----------|------|-------------|
| 1 | 6063038 | 1 | 24" Saw Bar |

EQUIPMENT AND PARTS WARRANTY

Diamond Products warrants all equipment manufactured by it against defects in workmanship or materials for a period of one (1) year from the date of shipment to Customer.

The responsibility of Diamond Products under this Warranty is limited to replacement or repair of defective parts at Diamond Products' Elyria, Ohio factory, or at a point designated by it, of such parts as shall appear to us upon inspection at such parts, to have been defective in material or workmanship, with expense for transportation and labor borne by Customer.

In no event shall Diamond Products be liable for consequential or incidental damages arising out of the failure of any Product to operate properly.

Integral units such as engines, electric motors, batteries, transmissions, etc., are excluded from this Warranty and are subject to the prime manufacturer's warranty.

THIS WARRANTY IS IN LIEU OF ALL OTHER WARRANTIES, EXPRESSED OR IMPLIED, AND ALL SUCH OTHER WARRANTIES ARE HEREBY DISCLAIMED.



333 Prospect Street, Elyria, Ohio 44035
(440) 323-4616 • (800) 321-5336 • Fax (440) 323-8689
www.diamondproducts.com