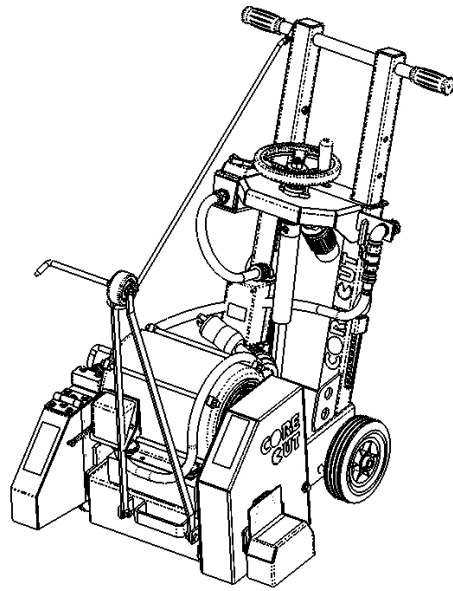


# DIAMOND PRODUCTS



## BASEMENT SAW PARTS LIST

# MODEL CC1507E

(March 2010)

Part #: 1801605

Intentionally Blank



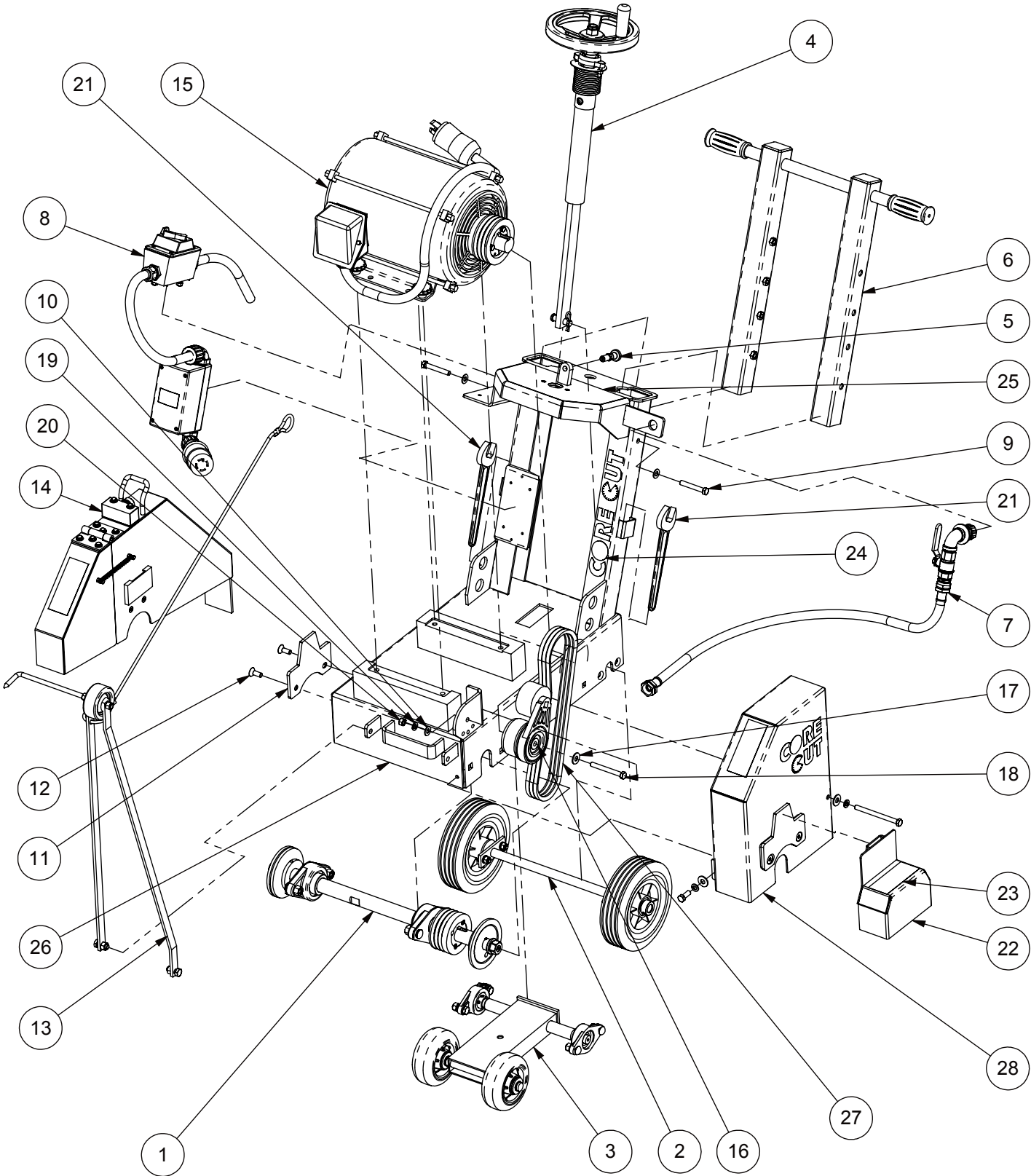
# DIAMOND PRODUCTS

## Basement Saw Model CC1507E

### Table of Contents

CC1507E Basement Saw Assembly . . . . .	4-5
7.5 HP Electric Motor Assembly. . . . .	6
Belt Guard Assembly . . . . .	7
Water Hose Assembly . . . . .	8
Power Supply Assembly . . . . .	9
Blade Shaft Assembly . . . . .	10
Rear Axle Assembly . . . . .	11
Front Axle Assembly . . . . .	12
Screw Feed Assembly . . . . .	13
Pointer Assembly . . . . .	14
20" Blade Guard Assembly . . . . .	16
Handle Bar Assembly/Service Belts. . . . .	17
Warranty Page . . . . .	20

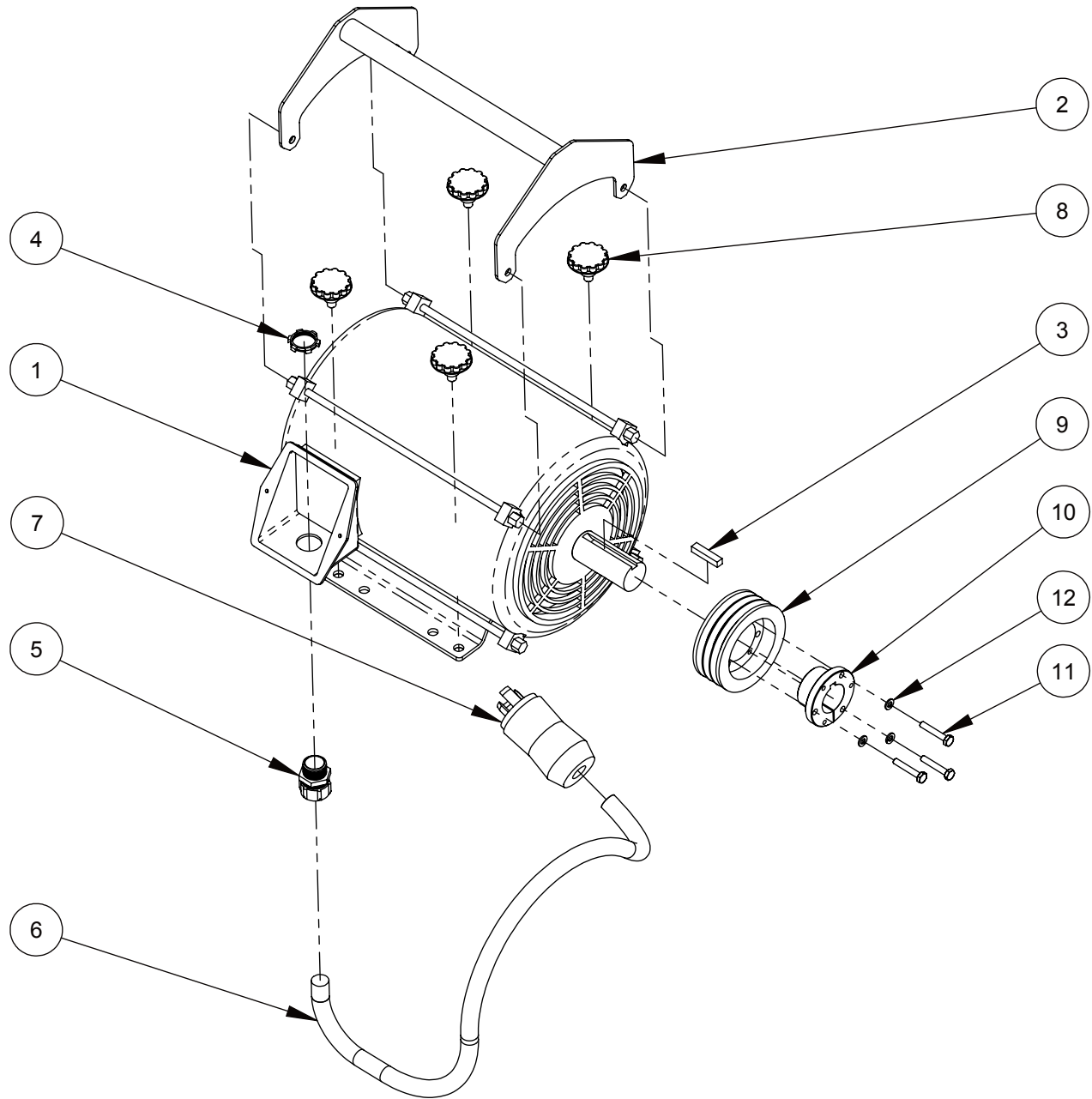
**5801502 CC1507E Basement Saw Assembly**



### 5801502 CC1507E Basement Saw Assembly Parts List

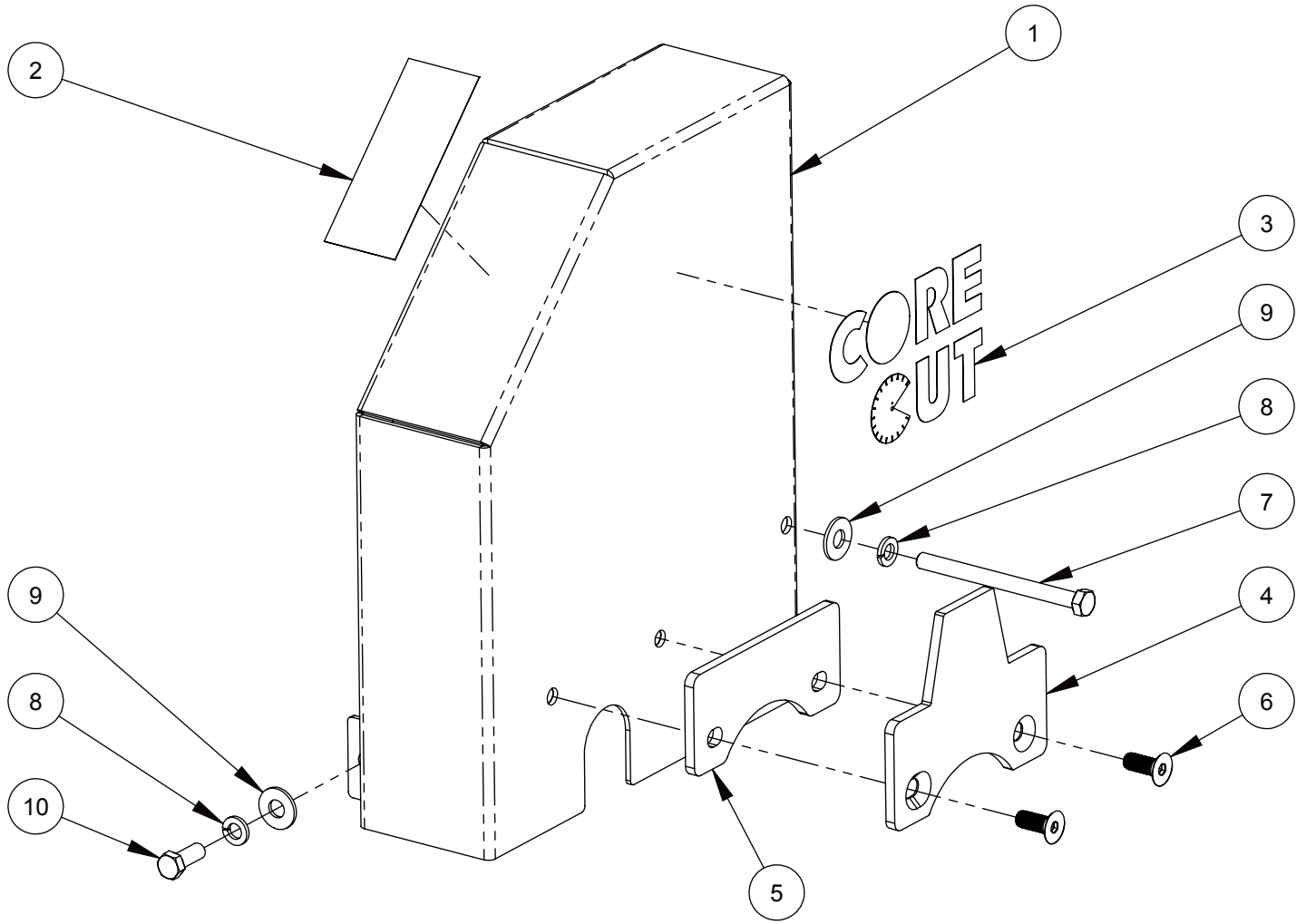
ITEM	PART NO.	QTY.	DESCRIPTION
1	6075184	1	Blade Shaft Assembly CC1507E
2	6075180	1	Rear Axle Assembly CC1507E
3	6048291	1	Front Axle Assembly
4	6048183	1	Screw Feed Assembly
5	2400138	1	Indexing Plunger 1/2-13
6	6048182	1	Handle Bar Assembly
7	6075182	1	Water Hose Assembly
8	6075183	1	Power Supply Assembly CC1507E
9	2900596	2	Cap Screw, Hex Hd., 3/8-16 x 2-1/2"
10	2900014	3	Flat Washer, 3/8" SAE
11	6048908	1	Tapered Guard Mount
12	2900235	2	Cap Screw, Flat Hd., 3/8-16 x 1"
13	6048080	1	Pointer Assembly
14	6048904	1	20" Blade Guard (Slip-On Style)
15	6075139	1	7.5HP Electric Motor Assembly CC1507E
16	2502126	1	Tensioner K99
17	2900473	1	Flat Washer, 3/8" USS
18	2903030	1	Cap Screw, Hex Hd., 3/8-16 x 3-1/4"
19	2900006	1	Lock Washer, 3/8" Split
20	2900033	1	Hex Nut, 3/8-16
21	2500256	2	Wrench, 1-1/16" Open End (27MM)
22	6075136	1	Hub/Shaft Guard CC1507E
23	1800001	1	Warning Label
24	1800352	1	Core Cut Saw Decal
25	1801450	1	Operating Label CC1507E
26	6075224	1	Frame Weldment CC1507E
27	2500036	3	V-Belt, 3VX355
28	6075227	1	Belt Guard Assembly CC1507E

## 6075139 7.5HP Electric Motor Assembly CC1507E



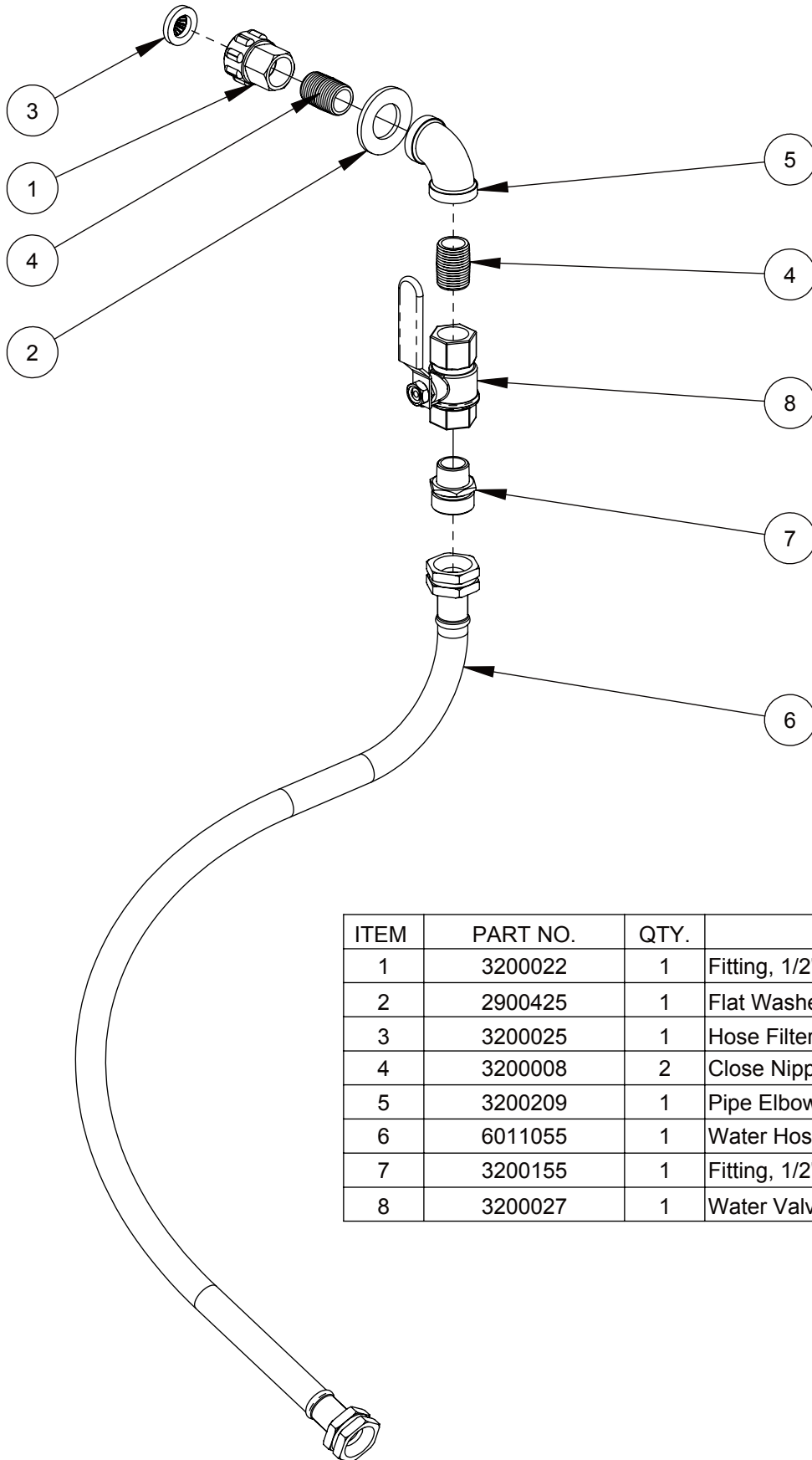
ITEM	PART NO.	QTY.	DESCRIPTION
1	2603307	1	7.5 HP Marathon Electric Motor
2	6048191	1	Lift Handle, Motor
3	6048046	1	Key, 5/16" Sq. x 1-1/2"
4	2800050	1	Lock Nut, 3/4" Sealing
5	2800171	1	Connector, 3/4" Cord
6	2503103	1	Cord 10/4 SO
7	2804521	1	30 Amp 480 Volt Plug
8	2703962	4	Hand Knob, 3/8-16 Stud
9	2506409	1	Sheave, 4.12-3 Groove
10	2506410	1	1610 x 1-3/8" Bushing
11	2900416	3	Tap Screw, Hex Hd., 1/4-20 X 1-1/2"
12	2900024	3	Lock Washer, 1/4" Split

## Belt Guard Assembly #6075227



ITEM	PART NO.	QTY.	DESCRIPTION
1	6075226	1	Belt Guard Weldment CC1507E
2	1800001	1	Warning Label
3	1800352	1	Core Cut Saw Decal
4	6048908	1	Tapered Guard Mount
5	6048915	1	Tapered Guard Mount Spacer
6	2900744	2	Capscrew, Flat Hd., M10 x 25mm
7	2900375	1	Cap Screw, Hex Hd., 3/8-16 x 4-1/2"
8	2900006	2	Lock Washer, 3/8" Split
9	2900473	2	Flat Washer, 3/8" USS
10	2900005	1	Cap Screw, Hex Hd., 3/8-16 x 1"

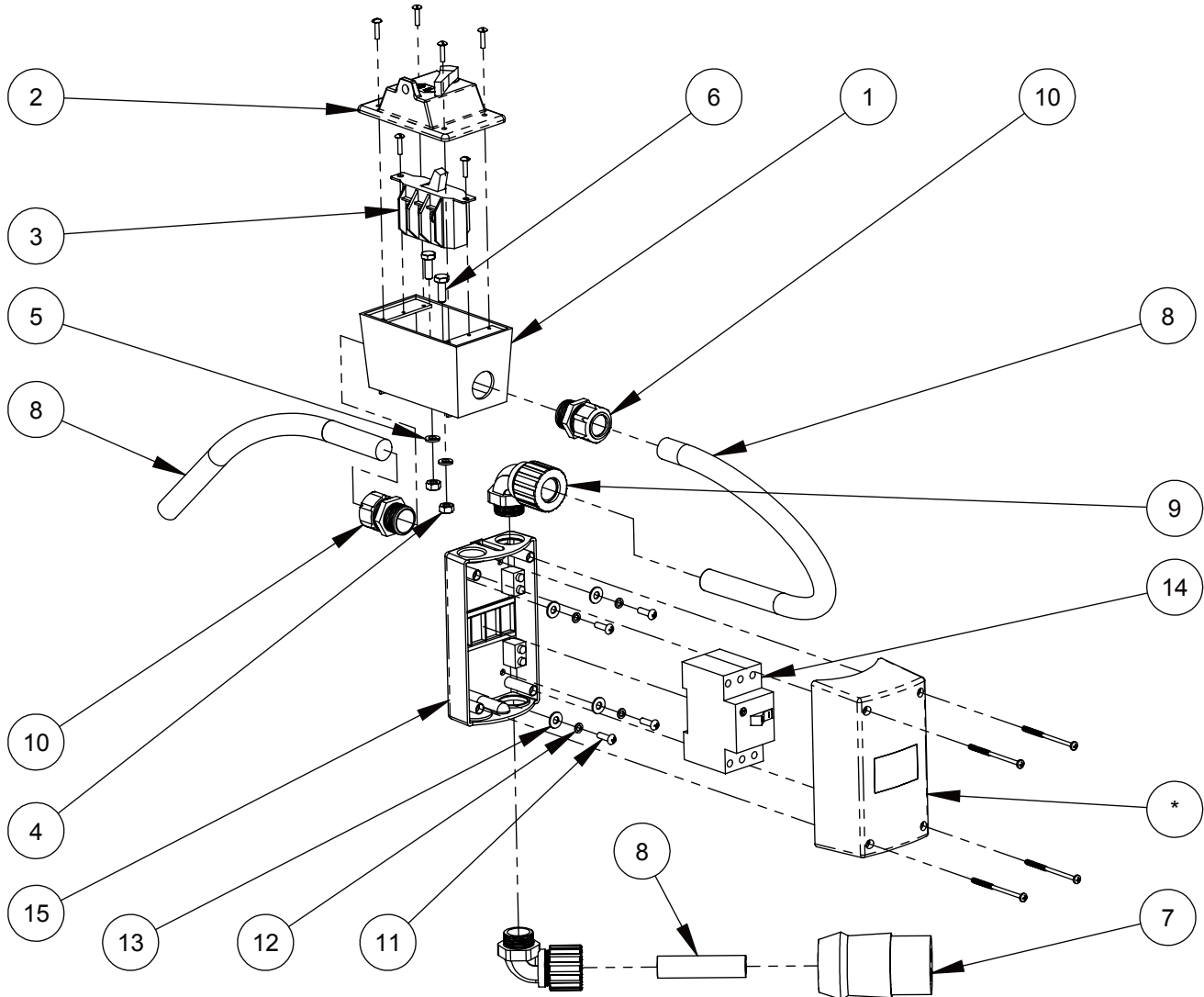
## 6075182 Water Hose Assembly



ITEM	PART NO.	QTY.	DESCRIPTION
1	3200022	1	Fitting, 1/2" F. Pipe to 3/4" F. Garden
2	2900425	1	Flat Washer, 7/8" SAE
3	3200025	1	Hose Filter Washer
4	3200008	2	Close Nipple, 1/2" NPT
5	3200209	1	Pipe Elbow, 1/2" Female
6	6011055	1	Water Hose Assembly, 30" Long
7	3200155	1	Fitting, 1/2" M. Pipe to 3/4" M. Garden
8	3200027	1	Water Valve

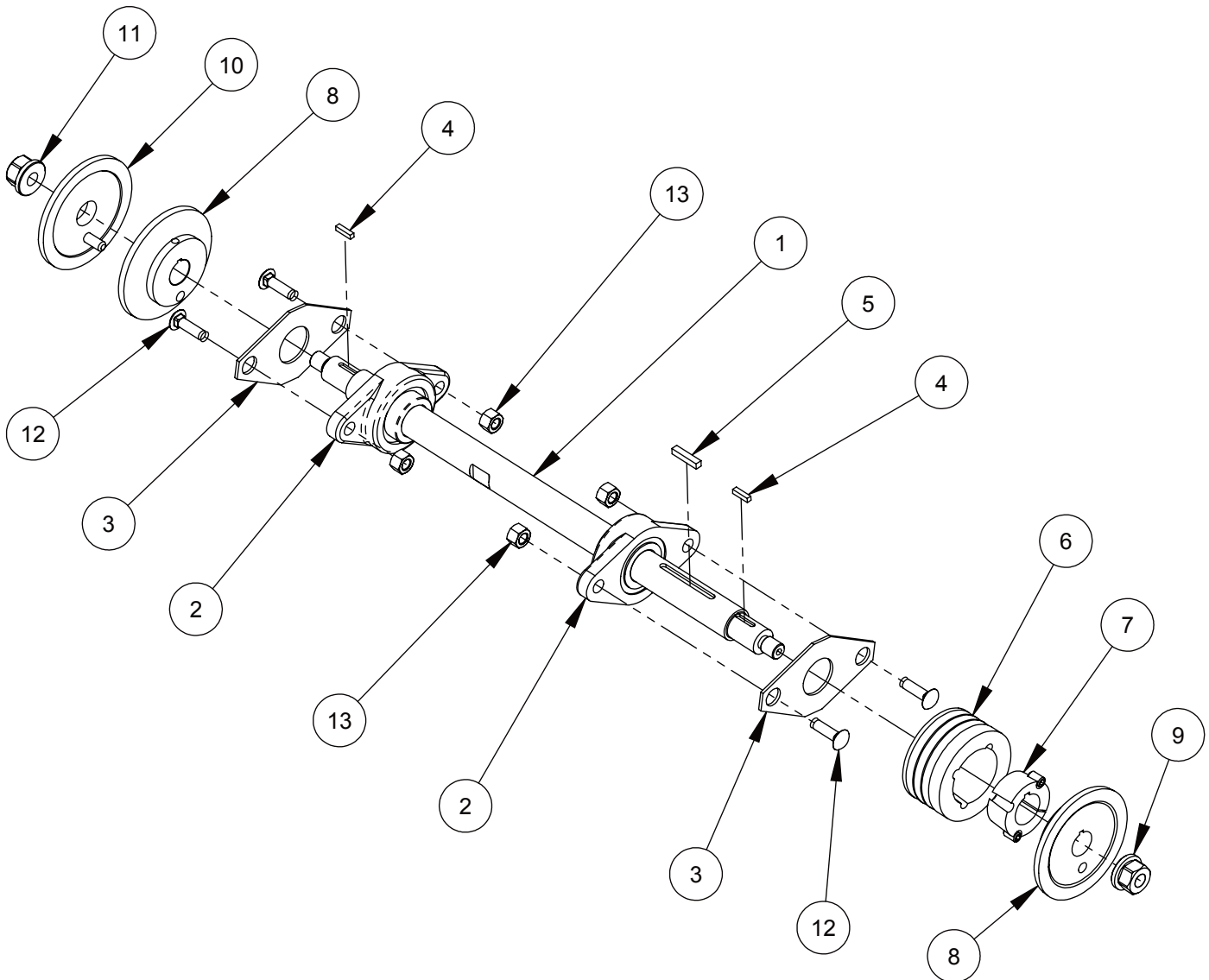


## 6075183 Power Supply Assembly



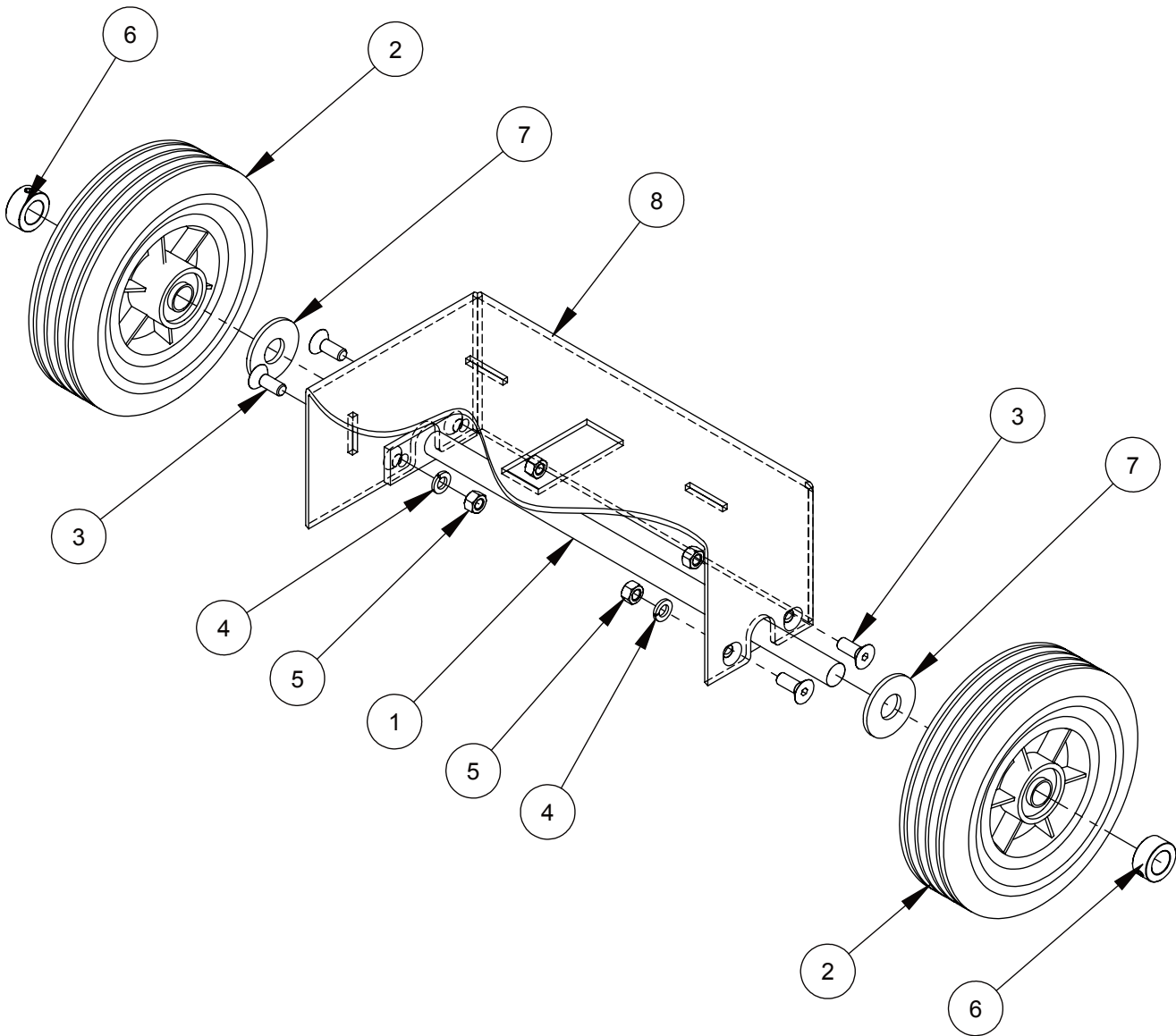
ITEM	PART NO.	QTY.	DESCRIPTION
1	2802877	1	Box, Electrical Enclosure
2	2804523	1	Switch Cover
3	2804509	1	Enclosure, 30 Amp Switch
4	2900125	2	Hex Nut, 1/4-20
5	2900024	2	Lock Washer, 1/4" Split
6	2900144	2	Cap Screw, Hex Hd., 1/4-20 x 3/4"
7	2804522	1	30 Amp 480 Volt Connector
8	2503103	3	Cord 10/4 SO
9	2801303	2	Connector, 3/4" Cord 90Deg, Plastic
10	2800171	2	Connector, 3/4" Cord
11	2900159	4	Machine Screw, Rd. Hd., #10-24 x 5/8"
12	2900038	4	Lock Washer, #10 Split
13	2900016	4	Flat Washer, #10 USS
14	2801372	1	Circuit Breaker CRV1
15	2801371	1	Enclosure, Circuit Breaker

## 6075184 Blade Shaft Assembly CC1507E



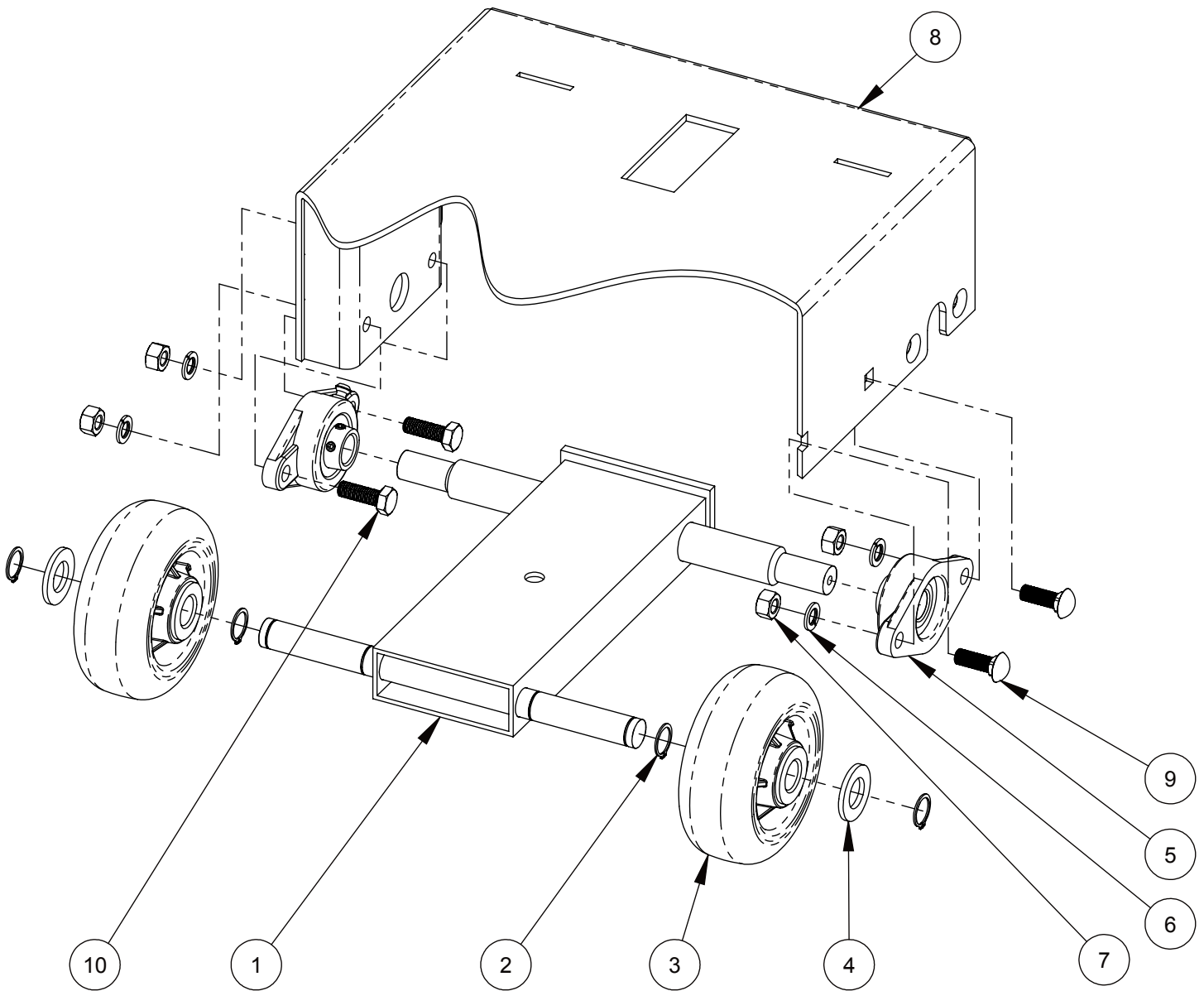
ITEM	PART NO.	QTY.	DESCRIPTION
1	6048865	1	Blade Shaft
2	2500576	2	Flange Block Bearing, 1-1/4"
3	6048037	2	Bearing Spacer
4	6048018	2	Key, 3/16" Sq. x 3/4"
5	6010169	1	Key, 1/4" Sq. x 1-1/4"
6	2500025	1	Sheave, 3.65-3 Groove
7	2500337	1	Taper Bushing, 1-1/4" w/ Set Screws
8	6048008	2	Inner Flange 4-1/2"
9	2900065	1	Flange Nut, 5/8-11 R.H.
10	6048009	1	Outer Flange, 4-1/2" w/ Pin
11	2900066	1	Flange Nut, 5/8-11 L.H.
12	2900322	4	M12-1.75 x 35 Carriage Bolt
13	2900327	4	Lock Nut, M12 Nylon

## 6075180 Rear Axle Assembly



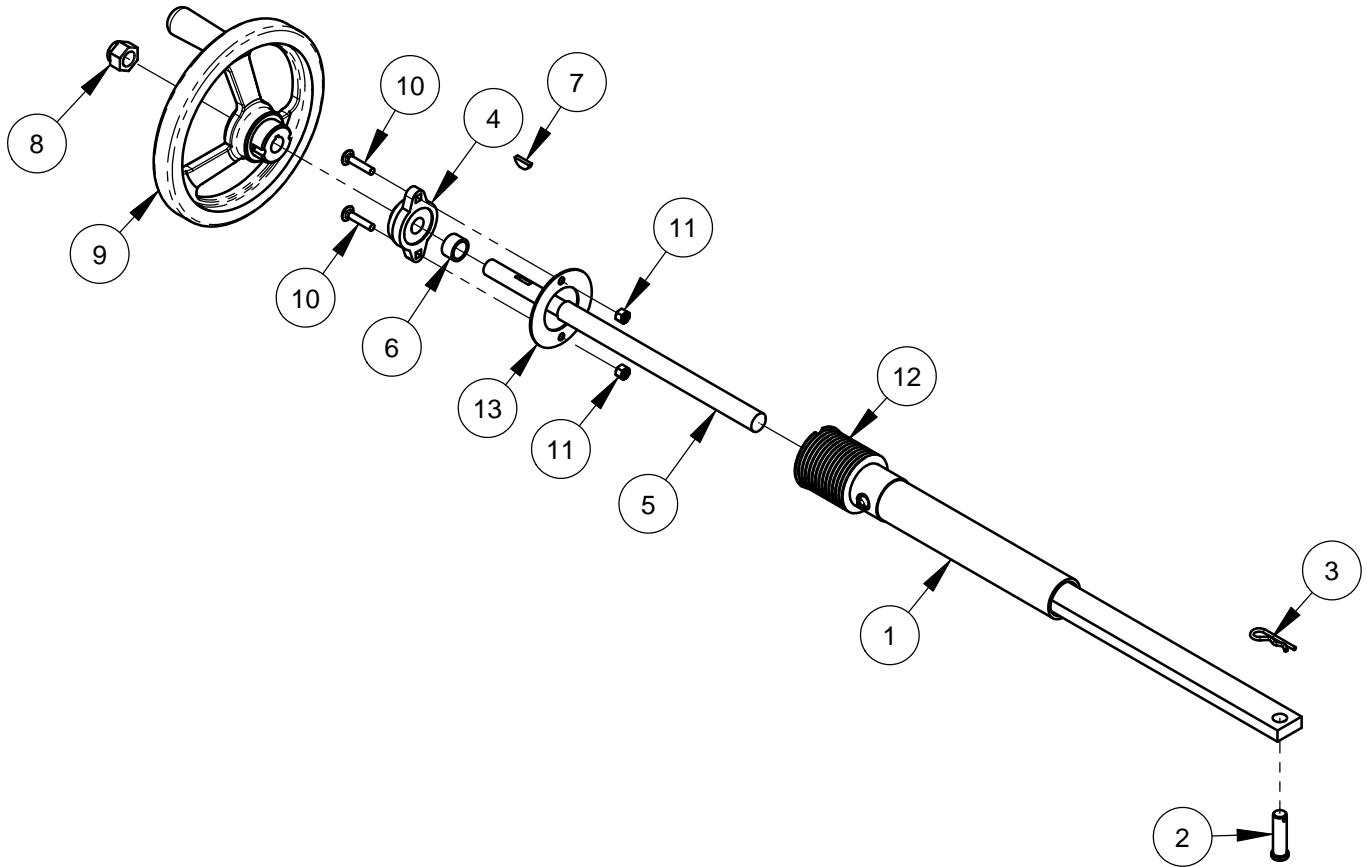
ITEM	PART NO.	QTY.	DESCRIPTION
1	6075140	1	Rear Axle Weldment
2	2501439	2	Wheel, 8 x 2 x 3/4"
3	2900235	4	Cap Screw, Flat Hd., 3/8-16 x 1"
4	2900006	4	Lock Washer, 3/8" Split
5	2900033	4	Hex Nut, 3/8-16
6	2400615	2	Set Collar, 3/4"
7	2901447	2	Flat Washer, 3/4 USS
8	6090608	1	Frame Base CC1507E (Partial-REF.)

## 6048291 Front Axle Assembly



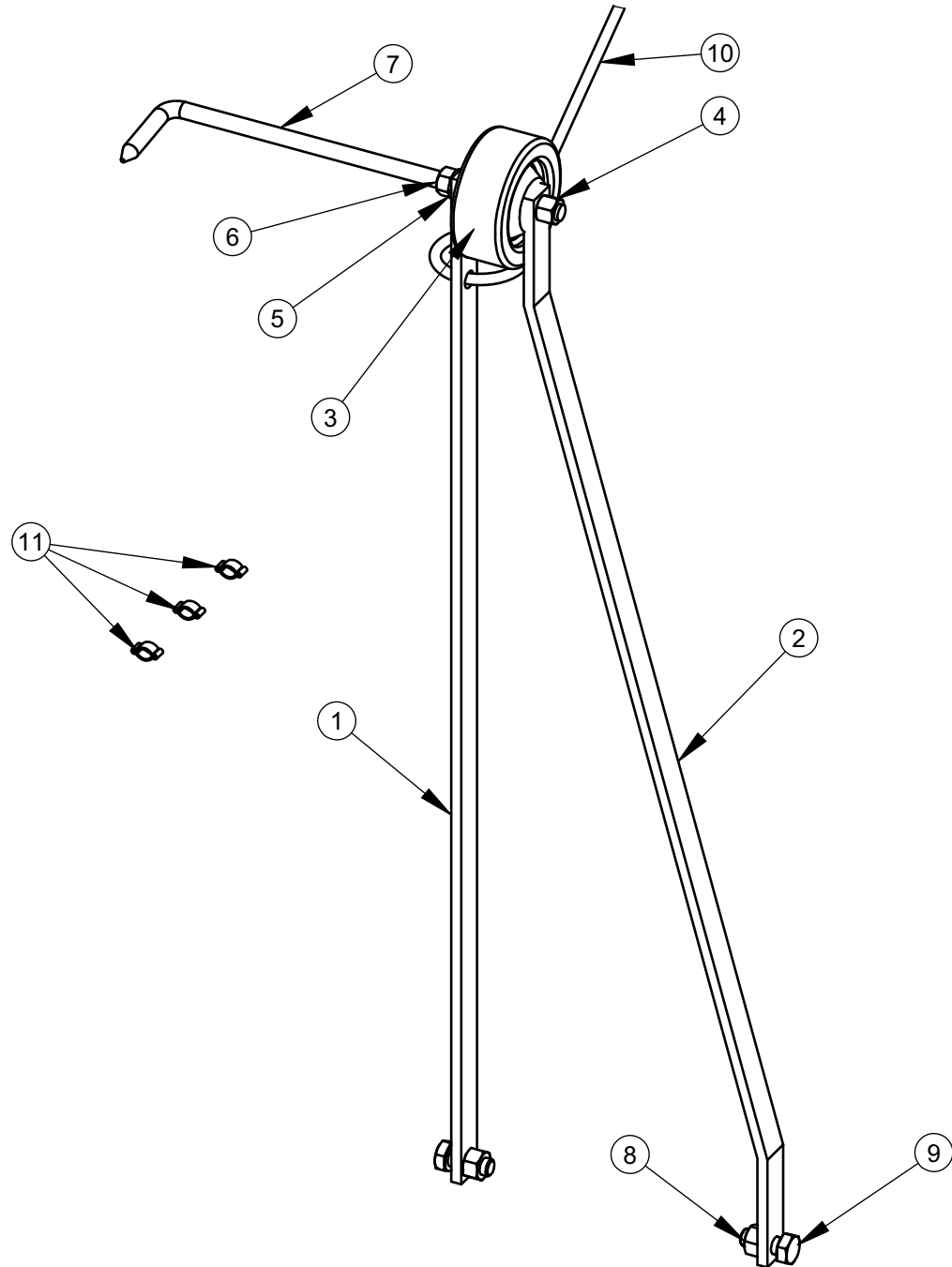
ITEM	PART NO.	QTY.	DESCRIPTION
1	6040212	1	Front Axle Weldment
2	2501186	4	Retaining Ring, External 3/4"
3	2500005	2	Wheel, 5" x 2" x 3/4"
4	2900003	2	Flat Washer, 3/4" SAE
5	2500011	2	Flange Mt. Bearing 3/4" Peer UCFT204-12-90
6	2900321	4	Lock Washer, M10 Split
7	2900304	4	Lock Nut, M10 Nylon
8	6075134	1	Frame Weldment CC1507E (Partial REF.)
9	2900324	2	Carriage Bolt, M10-1.75 x 30
10	2900223	2	Cap Screw, Hex Hd., M10 x 30mm

## SCREW FEED ASSEMBLY: 6048183



ITEM	PART NO.	QTY	DESCRIPTION
1	6047928	1	Adjustment Shaft W/Grease Fitting
2	2900354	1	Clevis Pin, 1/2" x 1-3/4"
3	2900276	1	Hairpin Cotter, 1/8" x 1/2" to 3/4"
4	2500807	1	Bearing, 5/8", Two Bolt Flange
5	6047929	1	Adjustment Screw
6	6047931	1	Spacer Tube 7/8 x 1/2
7	2900352	1	Woodruff Key, 5/32 x 3/4, #506
8	2900355	1	Lock Nut, 5/8-18, Flex Top
9	2500800	1	Handwheel, 8" x 5/8"
10	2900373	2	Carriage Bolt, 1/4-20 x 1-1/4", GR5
11	2900010	2	Lock Nut, 1/4-20 Nylon
12	6048036	1	Bellow, 8" Long
13	6048038	1	Bellow Mount Washer

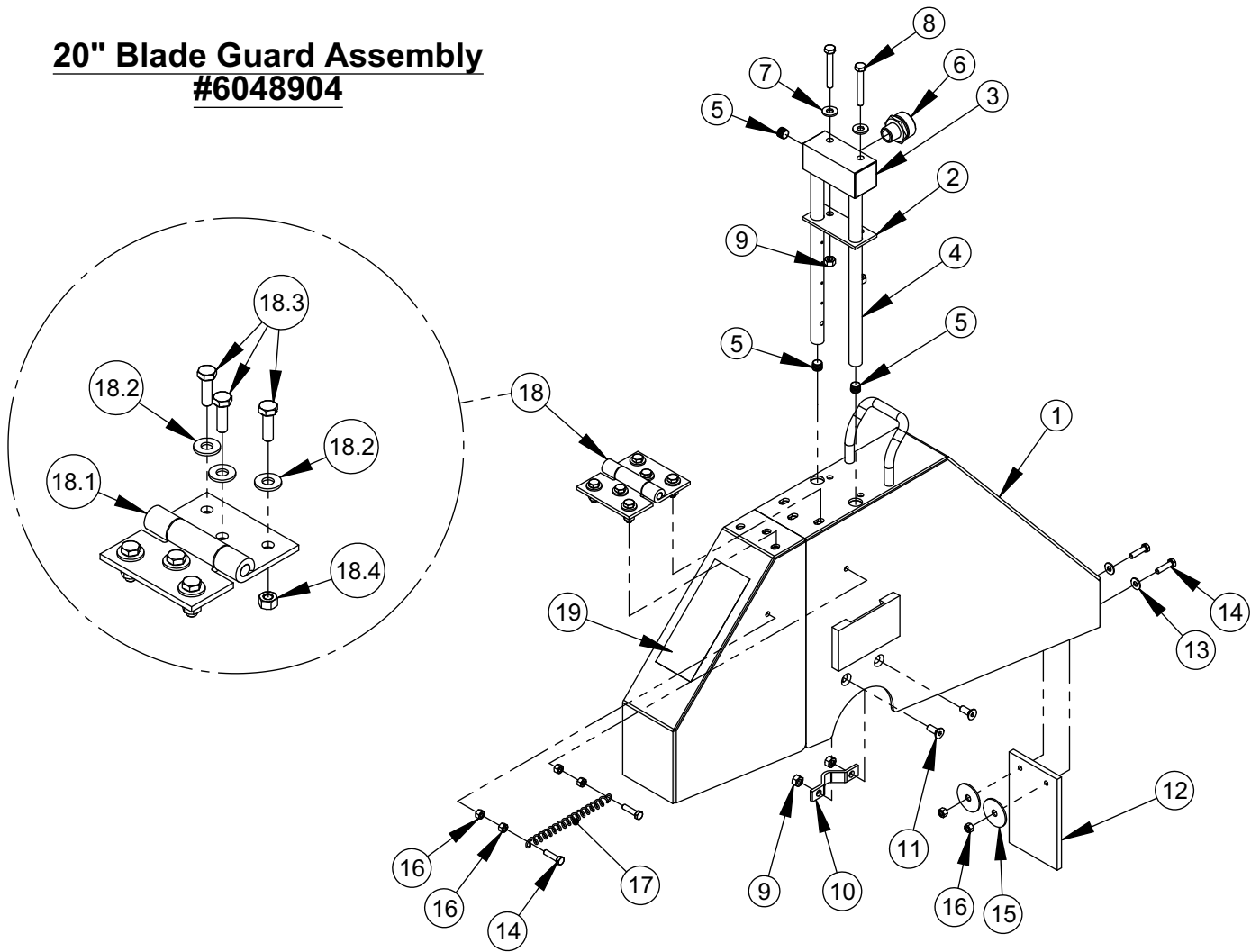
## Pointer Assembly #6048080



ITEM NO.	PART NUMBER	QTY.	DESCRIPTION
1	6048069	1	Pointer Bar - Straight
2	6048070	1	Pointer Bar - Offset
3	2500624	1	Wheel, 3"
4	2900018	1	Lock Nut, 3/8-16 Nylon
5	2900006	1	Lock Washer, 3/8" Split
6	2900033	1	Hex Nut, 3/8-16
7	2900032	1	Pointer Rod
8	2900304	2	Lock Nut, M10 Nylon
9	2900333	2	Cap Screw, Hex Hd., M10 x 25mm
10	6048078	1	Rope, 1/4 x 78"
11	3200221	3	Pinch Clamp, Two Ear

Intentionally Blank

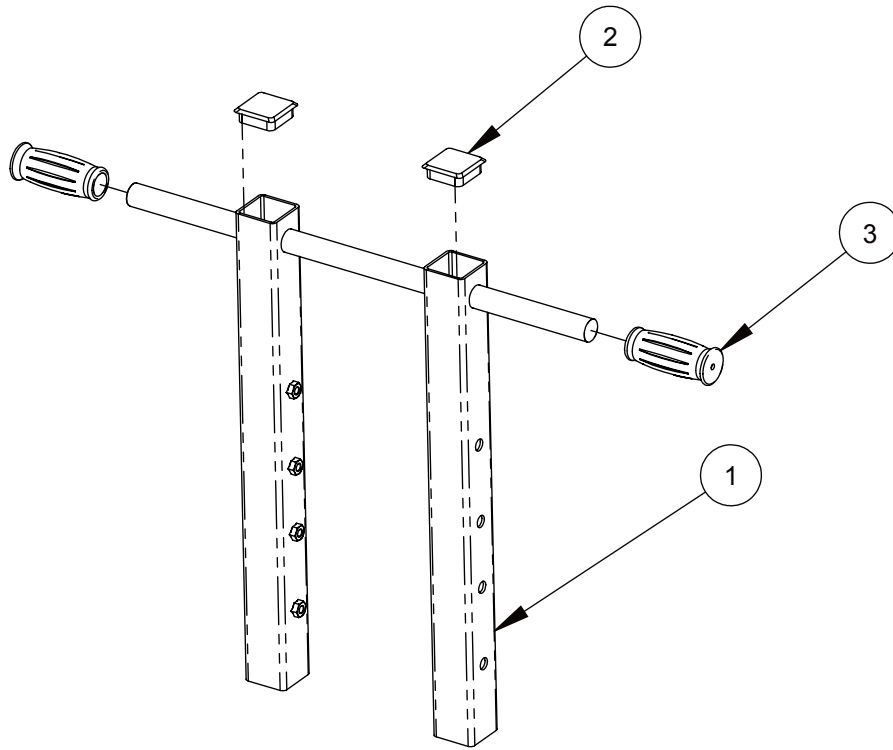
# 20" Blade Guard Assembly #6048904



ITEM	PART NO.	QTY.	DESCRIPTION
1	6048905	1	20" Blade Guard
2	2500829	1	Water Manifold Gasket
3	6048123	1	Water Manifold
4	6010085	2	Water Tube for 20" Guard
5	3200001	3	Plug, 1/8" NPT
6	3200002	1	Fitting, 3/8" M. Pipe to 3/4" M. Garden
7	2900009	2	Flat Washer, 1/4" SAE
8	2900244	2	Cap Screw, Hex Hd., M6 x 45mm
9	2900302	6	Lock Nut, M6 Nylon
10	6048155	2	Water Tube Clamp
11	2900308	4	Cap Screw, Flat Hd. Soc., M6 x 16mm
12	6048039	1	Splash Flap
13	2900016	2	Flat Washer, #10 USS
14	2900309	4	Cap Screw, Hex Hd., M5 x 20mm
15	2900083	2	Fender Washer, 1/4" x 1-1/4"
16	2900301	6	Lock Nut, M5 Nylon
17	2500067	1	Spring, 3/8" x 4"
18	6048027	1	Hinge Assy., Metric Fasteners
18.1	2500270	1	Blade Guard Hinge
18.2	2900009	6	Flat Washer, 1/4" SAE
18.3	2900310	6	Cap Screw, Hex Hd., M6 x 20mm
18.4	2900302	6	Lock Nut, M6 Nylon
19	1800001	1	Warning Label

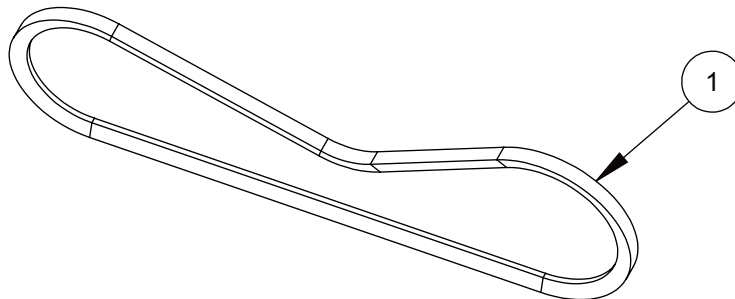


## 6048182 Handle Bar Assembly



ITEM	PART NO.	QTY.	DESCRIPTION
1	6040213	1	Sliding Handle Weldment
2	2501441	2	Cap, 2" Sq. Tube
3	2500636	2	Handle Grip

## Quick Reference Service Belts for CC1507E



ITEM	PART NO.	QTY.	DESCRIPTION
1	2500035	3 Req'd	V-Belt, 3VX335





## **EQUIPMENT AND PARTS WARRANTY**

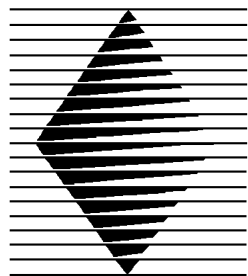
Diamond Products warrants all equipment manufactured by it against defects in workmanship or materials for a period of one (1) year from the date of shipment to Customer.

The responsibility of Diamond Products under this Warranty is limited to replacement or repair of defective parts at Diamond Products' Elyria, Ohio factory, or at a point designated by it, of such parts as shall appear to us upon inspection at such parts, to have been defective in material or workmanship, with expense for transportation and labor borne by Customer.

In no event shall Diamond Products be liable for consequential or incidental damages arising out of the failure of any Product to operate properly.

Integral units such as engines, electric motors, batteries, transmissions, etc., are excluded from this Warranty and are subject to the prime manufacturer's warranty.

**THIS WARRANTY IS IN LIEU OF ALL OTHER WARRANTIES, EXPRESSED OR IMPLIED, AND ALL SUCH OTHER WARRANTIES ARE HEREBY DISCLAIMED.**



# **DIAMOND PRODUCTS**

333 Prospect Street, Elyria, Ohio 44035  
(440) 323-4616 • (800) 321-5336 • Fax (440) 323-8689

[www.diamondproducts.com](http://www.diamondproducts.com)